



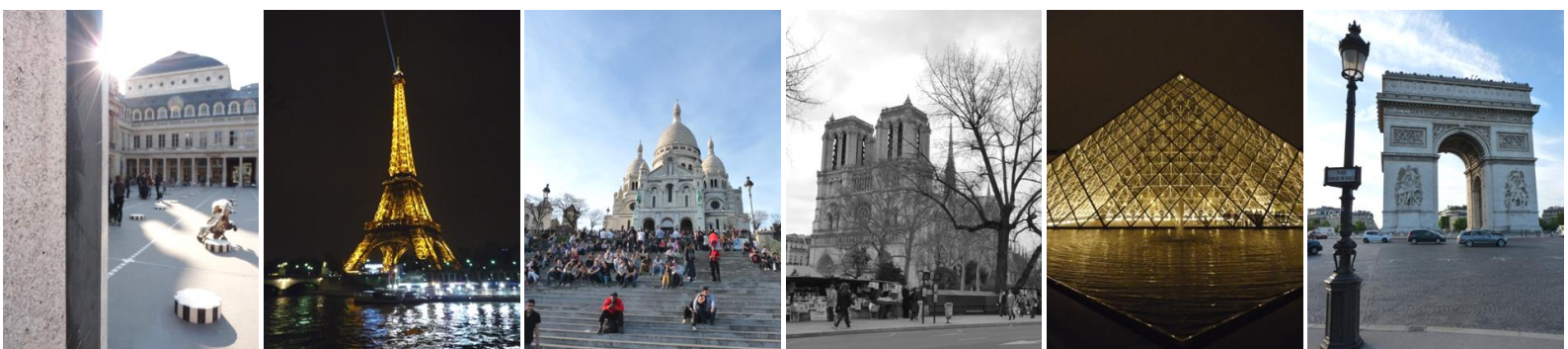
PARIS SCHOOL OF ECONOMICS
ÉCOLE D'ÉCONOMIE DE PARIS

Studying at the Paris School of Economics

International English Masters programmes ... within the French system !

*You're currently studying or working abroad?
You want to start a Masters degree at the Paris School of Economics?
You are looking for funding to finance your stay?
The French education system seems like a puzzle to you?*

Even though the PSE offers its masters programs in English in an international environment; it is part of the French higher education system. **Learn to know and understand it better!**



Brochure updated in December 2016

The European System

Thanks to the ECTS (**European Credit Transfer System**) all students - whether they are French or international - can easily understand and compare their degree programme to any other European degree. It is a system of cumulative and transferable educational units. Each Educational Unit (EU) has a value defined in ECTS credits and corresponds to a number of working hours (lessons, tutorials, practical work and personal study, as well as exam) which students must complete to obtain an EU. A successfully completed year represents **60 ECTS credits**, with around 30 ECTS credits per semester. This system facilitates the mobility of students within Europe during their university years.

French higher education is divided into 3 “cycles” in accordance with the common European system: **Licence (Bachelor’s), Masters, and Doctorate (LMD)**.

The number of semesters of postsecondary study and their equivalent in ECTS credits are counted toward the award of degrees:

- **Licence (L)** = A-level + 6 semesters = acquisition of 180 ECTS credits
- **Master (M)** = Licence + 4 additional semesters = acquisition of 120 ECTS credits.
- **Doctorate (D)** = a minimum of 3 years after the Masters (not expressed in ECTS credits)

Masters degree can be either professional or research-based with a possibility of a combination of both. Advancing from one “cycle” to another is not automatic and requires fulfilling certain prerequisites and, in some cases, completing an application process. **At PSE, all masters’ degrees are research-based.** The PhD is a natural continuation of the Masters Degree and graduate students access this path under certain academic and financial conditions. Therefore, there is no direct admission into the Doctoral training. This is the same system as in most US universities, where the first two years of PhD program are devoted to course work (and the admission into the third year is conditional on successful performance on the first two years). Thus, one can think of admissions to PSE master’s in the same way as admissions to the course-work years of a standard US-university-based PhD program. Each year, in early December, Master students wishing to pursue a Doctorate can attend a dedicated meeting.

Organization of the academic year in France

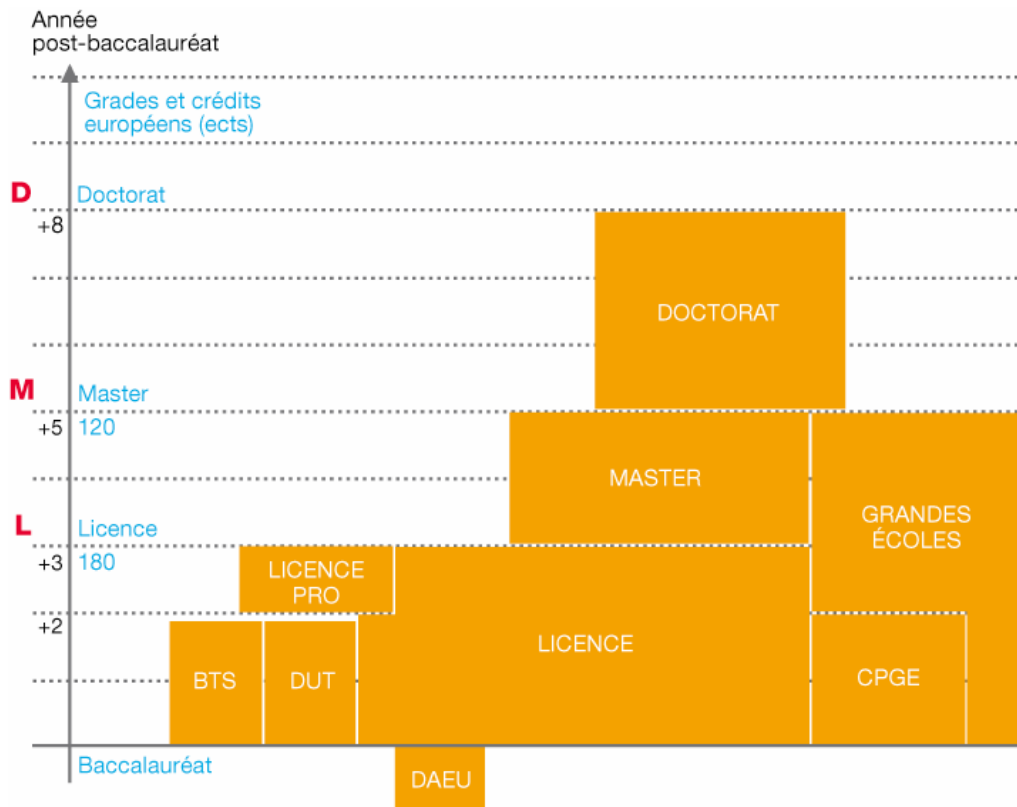
Each university year is divided into 2 semesters of approximately 4 months each:

- **First semester:** from September/October to the end of January;
- **Second semester:** from early February to the end of May.

The examination is held usually at the end of each semester. Certain courses can continue through the summer until September in the following academic year.

At PSE, the academic training starts in September and finishes in August. Therefore there is no possibility to start the programme at a different period of the academic year. The masters’ dissertation defense sessions are held in June and, optionally, at the beginning of September.

French Higher Education System at a glance



Source: Campus France

What is the difference between Universities and *Grandes Ecoles*?

Grandes Ecoles are specific to France. They are divided into four main groups:

- Ecoles Normales Supérieures (ENS)
- Scientific and Engineering *Grandes Ecoles*
- Business and Management Schools
- Instituts d'Études Politiques (IEP)

Admission is granted upon a successful completion of an extremely demanding entrance examination. Preparatory classes (so called CPGE) equivalent to the first two years of a university course are programmes to prepare students for the entrance examinations. **At PSE, the masters' programmes are jointly organized by some of the *Grandes Ecoles*.**

Cost of studies

University tuition fees are lower than in other units of the French higher education system (about €500 a year, health insurance included) because the government covers much of the true cost of each student's education (which ranges from €8,000 to €14,000 per year). Therefore, **at PSE you will not pay more than €500 for a year of studies.**



Be autonomous and proactive!

The main mission of the French universities is to provide an education of excellence at a low financial cost for the student. Nevertheless, the downside of this policy is that they offer very little personalized service to individuals. Foreign students must be autonomous in their endeavors to get settled in France and fulfill the necessary administrative procedures. Even though the PSE does not provide a dedicated service, **students admitted to one of the masters' programmes are welcome to contact the International Mobility Assistance Service (Acc&ss) at the Cité Internationale Universitaire de Paris before or on their arrival to receive support and solutions to the problems they are experiencing while getting settled in Paris.**



<http://www.ciup.fr/en/mobilite/etudiant/home>

Admission & funding opportunities for international students

Financial aid from different institutions is available for international students to fund their masters degree. However, there are **a few key points to bear in mind if you wish to obtain a grant to study in France.**

The admission into the French higher education institution and the application for a scholarship are two independent processes managed by distinct organizations, even if the academic institution is involved in the grant allocation process, as it is often the case. **At PSE there is no integrated “admission through scholarship” system.**

You must be aware that you should start looking for funding and investigate the possible sources as early as in October, **one year before you start your studies.** The application procedures usually open in December, with deadlines as early as in January. You will encounter grants where candidates apply for funding directly and individually, sometimes through your future Higher Education institution (IDF, Eiffel..). The institution in charge of pre-selecting the files of the PSE Masters students who apply for grants is the EHESS. [See details in page 5]

At the PSE, the admission process deadlines (March and May) in some cases do not meet the calendar of grant allocation deadlines. We do not issue admission letters before the official admission process outcome (April and July) nor support candidates that are not yet officially accepted into our programmes. However, do not hesitate to contact the PSE masters secretariat for any other type of document of support for your grant application (letter of eligibility, letter of file reception etc). We invite all the future PSE students to explore Campus France website: <http://www.campusfrance.org/en/page/campusbourses-grant-search-engine>

Each year, **PSE Master students wishing to pursue a Doctorate** are invited to attend, in early December, an information session on PhD funding opportunities. During the academic year they receive the calls for applications for each type of PhD funding.

Details of the main funding opportunities for Masters candidates

Do not hesitate to visit the dedicated EHESS website (available in French):

<http://www.ehess.fr/fr/etudiant/mobilites/>

<http://www.ehess.fr/fr/etudiant/etudiants-etrangers/>

Bourses du gouvernement français (BGF)

The French Government allocates each year a number of scholarships for foreign students. The grant-holders are nominated by the cultural departments of French embassies worldwide in accordance with cooperation programs established by governmental priorities. The allocation period depends on the training programme or internship that the student agrees to complete in a given time with the aid of the grant. The quality of the grant holder's results may imply maintaining or withdrawal of the grant.

BGF are individual applications. Regardless of their residence, applicants for these scholarships must, **prior to their departure to France and sufficiently in advance**, contact the French embassy and consulate in their country of origin to obtain all the necessary information concerning the allocation procedure and application process.

Bourses des gouvernements étrangers (BGE)

Some countries offer grants for students wishing to undertake studies abroad. Interested students should contact **the Ministry of Education or the organism in charge of scholarships and international mobility in their country of origin**.

Bourse d'Excellence Eiffel for undergraduate students

Eiffel excellence scholarships are intended for students of less than 30 years old whose academic qualities have been recognized by the French institutions of higher education that wish to accept them to continue their studies at a master's level in fields such as engineering, economics and management; law and political science. **This scholarship privileges applications from students from emerging countries** in Asia, Latin America, Eastern Europe, the Middle East, and the new Member States of the European Union as well as students not yet installed in France. The grants are allocated for 12 or 24 months. **The deadline of submission is usually early December**. Final results are released at the end of February, beginning of March.

The application and the supporting documents are put together by the student and submitted first to the home academic institution. The application file must contain, among other documents (CV, transcripts, and academic project) a letter of recommendation from the student's tutor from the home institution. The files are submitted by the students' home institution to Campus France after a pre-selection.

At the PSE, given the early deadline of submission, we only support M1 students who apply for this grant to finance their second year of studies. The application files in PDF format are e-

mailed to the International Students Mobility Office of the EHESS (where PSE students are registered administratively) that preselects the candidates.

Bourse master Ile-de-France (IDF)

This scholarship, proposed by the Ile-de-France regional council is aimed at newcomers of less than 30 years old wishing to prepare a master's degree in a field of study of their choice in an institution of Higher Education in Ile-de-France.

Students who have already completed one year of study (or more) in France are not eligible.

Priority is given to applicants from countries and areas the Ile-de-France Region cooperates with (full list at the EHESS website) and candidates with an unfavorable economic situation. Particular attention is paid to the quality of the academic project.

The candidates must first contact the institution they want to undertake their studies at expressing the intention of applying for the IDF scholarship and submit their application file (CV, covering letter, academic project among other documents). **The dead-line for submission of the application file to the host institution is usually end of March.** The final results are known two months later. The chosen academic institution may refuse or accept the file. This decision is made independently by the university that sends all the accepted files (admitted candidates), ranked in order of priority to the regional council, who then proceeds to the final selection of candidates.

The candidates to our masters' programmes who wish to apply for the IDF grant should bear in mind that the PSE students are registered at the EHESS. This institution is in charge of submitting their applications to the IDF scholarship program. The applicants must send their IDF file along with the PSE certificate of admission to the International Students Mobility Office of the EHESS before the deadline. The certificate of admission into the PSE masters programmes is issued to accepted candidates only after the outcome of the admission jury meeting.

The Paris School of Economics



2016
World Top 7
Europe Top 3

The Paris School of Economics is a French research center of international standing in Economics, resulting from the merger of leading research and teaching institutions. **It brings together more than 500 students enrolled in Master's and PhD programmes.** PSE offers highly selective programmes, entirely in English, leading to careers in teaching and research, business, public administration or international organizations.

140
researchers
19 in the Top 5%
> 100 articles / y.

www.parisschoolofeconomics.eu